



# Wineries & Breweries

RANGE OVERVIEW & HYGIENE GUIDE



## Australia

call 03 9699 8999  
sales@wrdwells.com  
www.wrdwells.com

## New Zealand

call 09 263 9332  
sales@wellshygiene.co.nz  
www.wellshygiene.co.nz





# Vikan's professional cleaning tools have a proven track record of effectiveness in the wine-making and brewing sector.

## Constant Improvement

Today, Vikan's goal is to help users to improve standards of hygiene by introducing new solutions. By exchanging information with professionals in every sector, our specialists are able to develop tools to make our products more effective.

Vikan tools are ergonomically designed, hardwearing and durable, enabling users in the beverage industry to complete cleaning tasks more quickly and achieve better standards of hygiene.

Our products are available in several colours for different uses, offering convenience for storage and speeding up the stages of the cleaning process. Colour-coding is an essential element of any IFS/ BRC protocol.



Made in Denmark and Sweden. Vikan hygiene system® is one of the most comprehensive systems in the world created for manual cleaning and food handling.

**For more information:** [vikan.com](http://vikan.com)

## Advantages of Vikan tools

- Fully colour-coded tools made from EU and FDA-approved materials.
- Durable, heat and chemical-resistant.
- Smooth, easy to clean and quick drying.
- A complete range for effective cleaning of all surfaces and all types of equipment.
- Versatile products clear away debris, deep scrub and remove water effectively.
- Ergonomic design for correct movement and posture.
- Colour-coded tools to support compliance with HACCP and BRC protocols.



Established for over 80 years, W R & D Wells Pty Ltd have been supplying quality products to the dairy, food processing and manufacturing and rural industries.

**For more information:** [wrdwells.com](http://wrdwells.com)



# CLEANING TANKS & VERTICAL SURFACES



A small single-blade squeegee for smooth surfaces works as effectively as a glass squeegee, making walls quick to clean.

Code: Small Squeegee 28/07140+  
Fibreglass Handle 28/02938+ 1500mm



This adjustable water-fed brush with soft bristles is ideal for cleaning stainless steel equipment. Adjustable for ease of cleaning vertical surfaces and cleaning high areas.

Code: Angle Adjustable Brush 28/7067+  
Aluminium Handle 28/02937+ 1500mm



The Dinga water gun is suitable for cleaning floors and machinery. Squeezing the rubber insulated trigger determines the jet pattern which is ideal for a range of applications.

Code: Water Gun 28/00711+,  
Quick Fit Coupling 1/2" 28/00712



Foam sprayers are perfect for cleaning sanitary and small processing areas. Foam is applied without aerosols at normal water pressure.

Code: Ergo Foam Sprayer 55/9301+



Calibrated buckets available in 6L and 13L versions, available in 9 colours and approved for contact with food. Ergonomic and safe pouring design.

Code: 13L Bucket - 28/5686+  
6L Bucket 28/5688+



5500 pad holders are suitable for use with all Vikan handles and can be used with a soft pad for cleaning of vats and tanks. Handles available in range of lengths from 165 to 2780mm.

Code: Pad Holder 28/0550+, White Pad  
28/5525+, Aluminium Handle 28/02937+



The improved contact between the surface and the brush, along with the greater number of bristles, increases efficiency and cuts time needed for each stage of the cleaning process.

Code: Angle Adjustable Brush 28/7067+,  
Telescopic Handle 28/02975+



The Vikan food grade range offers a wide choice of waterfed and non-waterfed telescopic handles for adjusting equipment to the required height.

Code: Telescopic Handle 28/02991+  
(waterfed), 28/02975 (non-waterfed)



The High-Low brush angled shape ensures that it remains in constant contact with the surface when cleaning up high, allowing for a more effective clean.

Code: Hi-Low Brush 28/7047+  
Fibreglass Handle 28/02938+



FDA approved materials



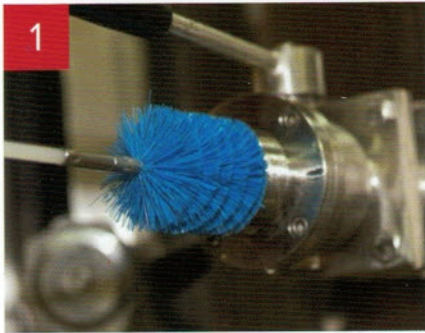
EU Regulations compliant



Available in up 9 colours\*



# CLEANING PIPES & EQUIPMENT



Vikan's tube brushes and flexible handles can be used in a variety of combinations suitable for cleaning all types of winery and brewing equipment.

Code: Tube Brush 28/5365+ ø 20mm, 28/5368+ ø 40mm, 28/5356+ ø 60mm



Hand brushes make it possible to clean hard-to-access areas.

Code: Long-Handled Brush 28/4186+



Use flexible handles and extension handles to clean chimney assemblies from walkways.

Code: Tube Cleaner 28/5354+, ø 12mm, Nylon Flex Handle 28/5352+ ø 1500mm, SS Flex Handle 28/53515 ø 750mm



External valve surfaces are easy to clean using a stiff-bristled hand-held brush.

Code: Scrubbing Brush 28/3890+



Vikan's squeegees are available in a variety of widths to suit different-sized hatches.

Code: Single Blade Squeegee 28/7150+ 500mm, 28/7160+ 600mm, 28/7170+ 700mm, Aluminium Handle 28/2937+



Small brushes, such as the 4237 model, allow for cleaning with greater accuracy.

Code: Utility Brush 28/4237+



This flexible brush can be bent into shape as required and is effective for cleaning external pipe surfaces. A soft version of this brush is also available for moving dust.

Code: Versatile Brush 28/53743 Extension Handle 28/2975+ 1.5-2.8m



Cleaning around the hatch generally requires a specific hand-held brush, to provide increased effectiveness.

Code: Long Handled Brush 28/4186+



It is good practice to assign a specific colour code to equipment for use on cleaning external surfaces, so that tools are used specifically for these tasks.

Code: Long Handled Brush 28/4186+ Calibrated Bucket 28/5686+ 13L



FDA approved materials



EU Regulations compliant



Available in up to 9 colours\*



# FLOOR CLEANING



Vikan's hard-wearing brooms for outdoor sweeping are available in a variety of sizes and colours.

Code: Heavy Duty Broom 28/2920+ 520mm  
Fibreglass Handle 28/02938+ 1500mm



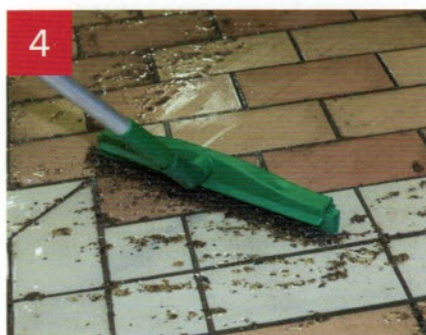
For the indoors, soft brooms available in a variety of sizes to remove day-to-day dirt.

Code: Soft Broom 28/3179+  
Ultra Hygienic Handle 28/2962+



Vikan's revolving neck squeegees clean easily around and beneath equipment.

Code: Dbl Blade Squeegee 28/7724+ 600mm  
Aluminium Handle 28/02937+



Vikan offers a variety of squeegee models in different sizes for every type of job.

Code: Rev. Neck Squeegee 28/7723+ 500mm,  
28/7724+ 600mm, 28/7725+ 700mm



The stiff-bristled high-low coving brush offers effective cleaning of floor-to-wall joints and skirtings, making it ideal for brushing floors.

Code: High Low Coving Brush 28/7047+  
Aluminium Handle 28/02937+



For larger surface areas, the 3194 model 600mm broom combines soft and stiff bristles to collect various-sized particles in a single step.

Code: Dual Bristle Broom 28/3194+  
Fibreglass Handle 28/2938+



Rounded brushes offer effective cleaning for drains. We recommend the use of a specific colour for bungs and drains in order to avoid contamination.

Code: Brush 28/7037+  
Aluminium Handle 28/02937+



5500 pad holders fitted with a blue or brown abrasive pad can also be used to remove encrusted matter and label adhesive.

Code: Pad Holder 28/05500+, White Pad  
28/5525+, Fibreglass Handle 28/2938+



With a design which makes it easy to clean and reduces clogging, the Vikan single blade squeegee is ultra hygienic.

Code: Single Blade Squeegee 28/7170+ 700mm  
Ultra Hygiene Handle 28/2962+



VIEW THE COMPLETE VIKAN HYGIENE RANGE ONLINE [WRDWELLS.COM](http://WRDWELLS.COM)



# PROCESSING & MANUAL HANDLING



1  
The Vikan range also includes a series of tools for use in handling grapes and drawing off wine.

Code: Ergonomic Shovel 1150mm 28/5600+



2  
The Vikan hygiene rake allows for easy handling of grapes when emptying trailers or placing into vats.

Code: Hygienic Rake 28/56915. White only, but can paired with colour coded handle.



3  
Extendable handle paired with hygienic rake to improve ergonomics and safety. The extendable handle is available in a range of colours.

Code: Hygienic Rake 28/56915  
Extendable Handle 28/02975+



4  
Ergonomic shovels exert less pressure on the operator's back, making it easier to scoop.

Code: Ergonomic Shovel 1310mm 28/56015



5  
The Vikan fork is made entirely of moulded polypropylene for improved hygiene and ease of maintenance.

Code: Hygiene Fork 28/56905



6  
Vikan hand shovels have a wide bevelled blade for increased effectiveness when scooping grapes.

Code: Hand Shovel 28/5673+



7  
The holes enable the water/liquid to drain quickly from the food products. Suitable for all industries.

Code: Drain Shovel 28/56035



8  
Used to scrape and loosen stubborn, sticky dirt from tiled and concrete floors. Removing such dirt before scrubbing makes the cleaning process quicker.

Code: Floor Scraper S/S 28/02910+ 260mm  
Non-Marking Nylon 28/029125 260mm



9  
This stainless steel or nylon scraper with an angled ergonomic handle is used for scraping smooth surfaces. This is to loosen stubborn dirt, food or sediment build up.

Code: Stainless Blade 28/4050+  
Nylon Blade 28/4055+



FDA approved materials



EU Regulations compliant



Available in up 9 colours\*



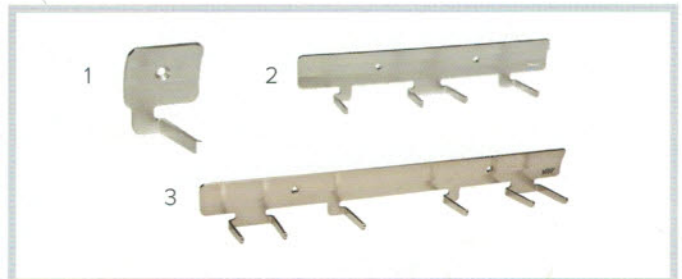
# EQUIPMENT RAILS & HOLDERS

Wells can supply and install high quality brackets and tool holders which are exceptionally durable and long lasting.

## VIKAN WALL BRACKETS STAINLESS STEEL

Available in three different sizes

1. Single Hook - 28/00616
2. Four Hook - 28/00617
3. Six Hook - 28/00618



## VIKAN WALL BRACKET POLYPROPYLENE/RUBBER

Available in two different sizes:

1. 1-3 Products\* - 28/1017+
2. 4-6 Products\* - 28/1018+
3. 3 Products - 28/00615+

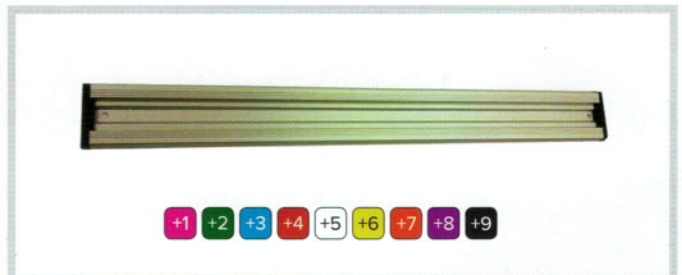
\* Replacement hooks & holders available



## TOOLFLEX TOOL HOLDER RAILS

Available in three different sizes:

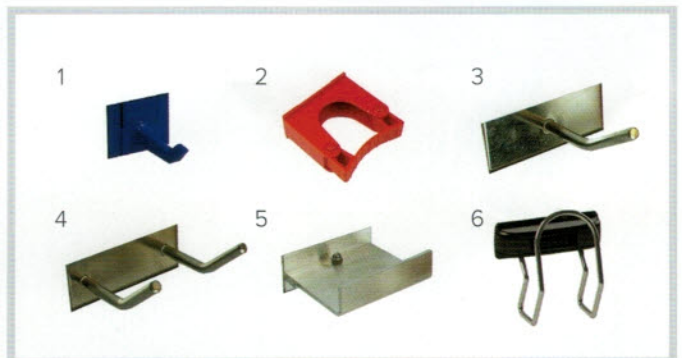
- 350mm - 28/TF350+
- 500mm - 28/TF500+
- 900mm - 28/TF551+



## TOOLFLEX TOOL HOLDER OPTIONS

1. Single Hook - 28/TF5853+
2. Clip (25-35mm) - 28/TF6253+
3. Stainless Single Hook - 28/SSH
4. Stainless Double Hook - 28/SSDH
5. Universal Hanger - 28/TF00621
6. Toolflex Multifix Hanger - 28/TF31351

\* Additional stainless steel tool and equipment holders can be made to order



## 5S PICTURE PLATE SYSTEMS

Suitable for Toolflex System

- Picture Plates - 18/PP+CODE
- Location Rails - 18/SS LOCRAIL  
(Size 350mm/500mm/900mm)



SEE OVER PAGE FOR 5S SHADOW BOARDS



# 5S EQUIPMENT SHADOW BOARDS

We can provide you with an simple and easy to follow identification system to help you maintain a safe an efficient workplace.

## 5S SHADOW BOARDS MOUNTED SYSTEMS

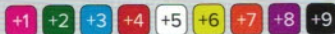
Fully customisable option, with boards ranging in size from 300x300mm to 2200x1200mm.

If your area requires larger boards we can also create layouts to run over multiple sheets to help you establish the perfect storage system.

### Looking to keep it standard?

Below is a list of commonly ordered sizes:

- 2200 (H) x 1200mm (W)
- 2200 (H) x 900mm (W)
- 2200 (H) x 600mm (W)
- 1200 (H) x 1200mm (W)
- 1200 (H) x 600mm (W)
- 900 (H) x 600mm (W)
- 600 (H) x 600mm (W)
- 300 (H) x 300mm (W)



## WHY CHOOSE WELLS & VIKAN?



FDA APPROVED  
CLEANING EQUIPMENT



SUPERIOR COLOUR  
CODING CHOICES



EQUIPMENT I.D.  
& STORAGE SOLUTIONS



EXPERT SITE SURVEYS  
& ASSESSMENTS

**swat**  
winery & vineyard supplies

**Wells**  
HYGIENE SYSTEMS | FOOD SAFETY

Your Hygiene &  
Food Safety Partner